



# B L A C K P A N T H E R S Y S T E M

PRODUCT CATALOG

EDITION 2025

[WWW.BLACKPANTHERSYSTEM.DE/EN](http://WWW.BLACKPANTHERSYSTEM.DE/EN)





# A B O U T   B L A C K P A N T H E R

Since our inception in 2019, we have been redefining functionality and design for synthesizer, gaming, and DJ enthusiasts. Our mission is to provide stands that combine practicality with unparalleled craftsmanship. Our stands are the pinnacle of stability and sophistication.

Crafted with precision, they feature a sleek, black design that not only adds aesthetic value, but also optimizes space efficiency and promotes an organized and elegant environment. Our commitment to quality is evident in our selection of premium materials and adherence to the highest German manufacturing standards.

Assembly of Black Panther stands is straightforward, supported by detailed instructions in English and German. This user-friendly approach ensures a seamless setup experience, regardless of technical expertise. Customization is at the heart of our offering. We offer a versatile range of accessories, including table tops, shelves, speaker mounts, and device trays, to meet different needs and ensure that our stands integrate seamlessly with any keyboard stand or studio setup. Safety and reliability are paramount in our design ethos.

Our stands are designed to support even the heaviest equipment without compromise, ensuring your gear is always secure.

Proudly a division of Mott Mobile Systeme, based in Tauberbischofsheim, in Germany, Black Panther, embodies the excellence of 'Made in Germany'. This partnership leverages Mott Mobile Systeme's extensive experience in manufacturing stage elements, ensuring that each product not only meets, but exceeds standards of quality and durability.

[WWW.BLACKPANTHERSYSTEM.DE/EN](http://WWW.BLACKPANTHERSYSTEM.DE/EN)



## CONTENTS

|                 |       |    |
|-----------------|-------|----|
| Keyboard Stands | _____ | 06 |
| Side Mounts     | _____ | 11 |
| Shelves & Racks | _____ | 14 |
| Accessories     | _____ | 17 |



# A D V A N T A G E S

## EASY TO SET UP

The Blackpanthersystem is easy to assemble, even without previous experience. We also provide assembly tutorials in both English and German to help you get started.

## SOPHISTICATED DESIGN

With its sleek and simple black construction, our stand is a true space-saver, giving you the flexibility to store extra sockets, cables and more. Say goodbye to clutter and hello to an organized and elegant setup.

## FAIR PRICE-PERFORMANCE RATIO

Excellent value for money, featuring high-quality materials and German engineering and manufacturing.

## STABILITY

Well-designed statics and construction for extreme stability



## CUSTOMIZABLE

Fully customizable and designed for versatile configurations to meet your specific needs

## WIDE RANGE OF EXTENSIONS

We provide a variety of accessories, such as shelves, speaker mounts, and trays for laptops or tablets, all tailored to enhance your keyboard stand or studio setup

## MAXIMUM SAFETY

The Blackpanthersystem is built to support heavy synths and keyboards without wobble

## CREATE YOUR DREAM SET-UP

Our keyboard stands are available in a range of widths, with modular tiers and variable sizes of extensions, so your setup is as individual as you need it to be. Build the setup of your dreams with our variable products

# M A N U F A C T U R I N G Q U A L I T Y — M A D E I N G E R M A N Y



Black Panther products embody the excellence of German engineering, where precision and durability come standard. The "Made in Germany" label is a globally recognized seal of quality, reflecting meticulous craftsmanship and rigorous quality control at every production stage.

Using premium powder-coated steel and innovative modular designs, Black Panther equipment offers unmatched reliability, stability, and adaptability for professional musicians and producers. This commitment to excellence ensures that every product delivers not just exceptional performance but also the long-lasting quality expected from German manufacturing. flexibility and adaptability needed to meet the highest professional demands. With Black Panther, you're not just investing in equipment; you're investing in a legacy of quality and innovation that has earned the trust of professionals worldwide.

**Made in Germany**

[WWW.BLACKPANTHERSYSTEM.DE/EN](http://WWW.BLACKPANTHERSYSTEM.DE/EN)



#### AVAILABLE COLOR OPTIONS

**POWDER COATED RAL 9005 JET BLACK**

**POWDER COATED RAL 3003 RUBY RED**

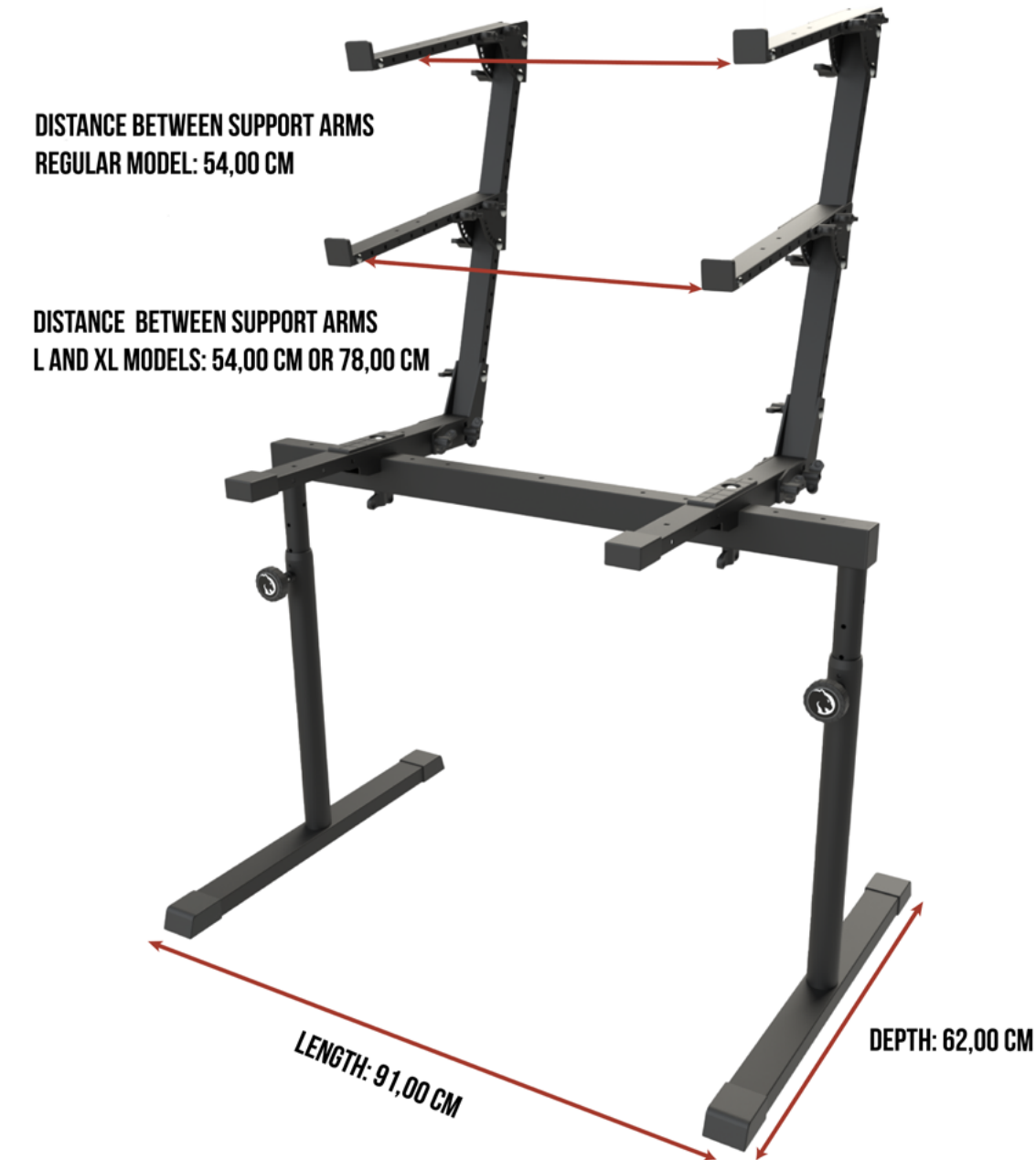
#### TECHNICAL DETAILS FOR ALL STAND-SETS WITH 2 AND MORE TIERS:

Support distance: 54,00 CM  
Support depth 1st level: 46,99 CM  
Support depth 2nd, 3rd level: 35,02 CM – 41,02 CM

Max. weight 1st level: 40,00 KG  
Max. weight 2nd, 3rd level: 20,00 KG  
Material: STEEL

#### TECHNICAL DETAILS FOR ALL STAND-SETS WITH 1 TIER:

Support distance: 54,00 CM | 78,00 CM  
Support depth 1st level: 40,00 CM  
Max. weight 1st level: 80 KG



#### EXPERT TIP

When planning your own setup, you can find the dimensions of your keyboard in its user manual. If you also own smaller synthesizers that are not compatible with the support arm spacing, you can easily use one of our convenient shelves made of aluminum. Simply attach the shelf to the desired level, and you can use it to hold multiple smaller devices. This allows for a versatile and organized setup that accommodates all your equipment. You can find our shelves on page 14 and following.





SKU: 62057 | PARA PLUS

Sturdy 3-tier keyboard setup with an additional diagonal brace, it provides extra stability for setups with heavy synthesizers to help prevent wobbling.

length : 91,00 CM  
depth : 62,99 CM  
height : 117 CM-145 CM

weight : 18,14 KG  
material : STEEL



SKU: 62058 | PARA S PLUS

A 3-tier keyboard stand designed for heavy synthesizers, with additional diagonal brace. With built-in 8-way power strip bracket, customizable storage, and side mount compatibility, it's the choice for serious synth enthusiasts.

length : 91,00 CM  
depth : 62,99 CM  
height : 117 CM - 145 CM

weight : 19,64 KG  
material : STEEL





SKU: 8796 | PARA

Sturdy 3-tier keyboard setup, adjustable angles & height, optional storage trays, side mount compatibility, perfect for synth enthusiasts.



length : 91,00 CM  
depth : 62,99 CM  
height : 117 CM - 145 CM

weight : 17 KG  
material : STEEL



SKU: 8797 | PARA S

A 3-tier keyboard stand designed for heavy synthesizers, ensuring rock-solid stability. With built-in 8-way power strip bracket, customizable storage, and side mount compatibility, it's the choice for serious synth enthusiasts.



length : 91,00 CM  
depth : 62,99 CM  
height : 117 CM - 145 CM

weight : 18,50 KG  
material : STEEL



SKU: 8798 | CEDRO

Cedro: 2-Tier Keyboard Stand Set. Extremely stable, ergonomic design, and expandable with Blackpanther Add-Ons.



length : 91,00 CM  
depth : 62,99 CM  
height : 91 CM - 120 CM

weight : 14,70 KG  
material : STEEL



SKU: 8799 | CEDRO S

2-Tier Keyboard Stand Set with built-in 8-way power strip. Exceptionally stable, ergonomic design – expandable with Blackpanther Add-Ons.



length : 91,00 CM  
depth : 62,99 CM  
height : 91 CM - 120 CM

weight : 16,20 KG  
material : STEEL





**SKU: 8800 | BABACU REGULAR**

A versatile single-tier keyboard stand with 8-way adjustable height settings for musicians of all levels. The Babacu serves as a foundational stand, offering a solid base that can be easily expanded and customized with additional tiers and add-ons at a later time, ensuring it evolves with your changing needs.

|        |                 |          |            |
|--------|-----------------|----------|------------|
| length | : 91,00 CM      | weight   | : 10,90 KG |
| depth  | : 62,99 CM      | material | : STEEL    |
| height | : 62 CM – 90 CM |          |            |



**SKU: 8997 | BABACU S**

Similar to Babacu but includes a built-in mounting plate for a 19-inch, 8-way power strip. Of course, you can always start with a single-layer Babacu and upgrade to multiple tiers later on – our system grows with your needs.

|        |                 |          |            |
|--------|-----------------|----------|------------|
| length | : 90,00 CM      | weight   | : 12,40 KG |
| depth  | : 62,99 CM      | material | : STEEL    |
| height | : 62 CM - 90 CM |          |            |



S I D E M O U N T S





SKU: 59205-005 | QUASSIA NOTA SET - LAPTOP HOLDER

Attaches seamlessly to Black Panther keyboard stands, offering precise height and angle adjustments. Ideal for sheet music or smaller synths. Made of high-quality aluminum. With lateral mount set Iberoxo Braco 20 cm & Iberoxo Tubo 50 cm.



length : 45,00 CM  
depth : 27,50 CM  
weight : 2,37 KG



SKU: 59204-005| QUASSIA TABLETA SET - TABLET HOLDER

Ideal for tablets and sheet music, offering infinite viewing angles. Includes lateral mount set Iberoxo Braco 20 cm & Iberoxo Tubo 50 cm. Perfect for sheet music, smaller synths, and audio interfaces.



length : 30,00 CM  
depth : 22,50 CM  
weight : 2,05 KG



SKU: 59203-005 | QUASSIA ALTAVOZ SET - SPEAKER MOUNT

This speaker mount is specifically designed for side mounting on keyboard stands, providing a secure and stable solution for your audio setup. Includes lateral mount set Iberoxo Braco 20 cm and Iberoxo Tubo 50 cm. Support surface: 20 cm × 20 cm.



length : 20,00 CM  
depth : 20,00 CM  
weight : 1,94 KG



SKU: 61523-005 | MICROPHONE EXTENSION SET

The Mic Holder Set from Black Panther enhances stands with easy-to-attach, lateral microphone placement for flexible use. The standard set comes with our lateral mount Iberoxo Braco 20 cm and Iberoxo Tubo 50 cm.



material Tubo & Braco : ALUMINUM , STEEL





SKU: 8855 | FREIJO DOIS 1000 MM X 300 MM IN ALUMINUM

A premium shelf measuring 1000 × 300 mm, finished in RAL9005 or RAL3003 matte, designed for 2nd and 3rd tier use. Each shelf comes with a complete set of fixing accessories.

|        |                    |          |            |
|--------|--------------------|----------|------------|
| length | : 100,00 CM        | weight   | : 1,78 KG  |
| depth  | : 30,00 CM         | material | : ALUMINUM |
| color  | : BLACK   RUBY RED |          |            |



SKU: 8854 | FREIJO UM 650 MM X 300 MM ALUMINUM

A sturdy shelf measuring 650mm x 30mm, finished in RAL9005 or RAL3003 matte for 2nd & 3rd tier. Each shelf includes a comprehensive fastening accessories set Perfect for smaller synthesizers.

|        |                    |          |            |
|--------|--------------------|----------|------------|
| length | : 65,00 CM         | weight   | : 1,18 KG  |
| depth  | : 30,00 CM         | material | : ALUMINUM |
| color  | : BLACK   RUBY RED |          |            |



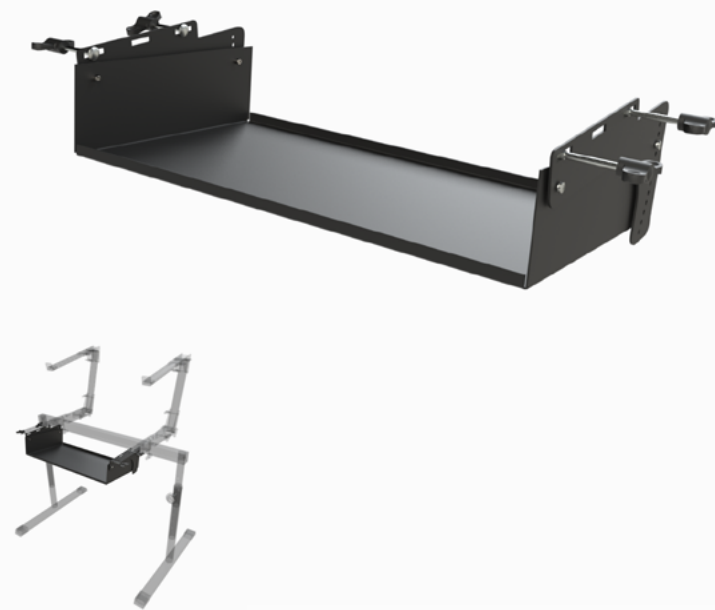


**SKU: 56051 | SAPUCAIA UM 19" 1 U RACK SHELF ADD-ON**

Optimize your setup with our 19-inch adjustable rack mount, designed as a versatile add-on for your keyboard stand. Featuring 13 angle configurations, it provides flexible gear placement between tiers or conveniently beneath the first layer.

length : 48,01 CM  
depth : 24,38 CM  
height : 4,52 CM

weight : 2,10 KG  
material : ALUMINUM



**SKU: 56052 | SAPUCAIA DOIS 19" 2 U RACK SHELF ADD-ON**

Enhance your setup with our 2U 19-inch rack mount, the ideal add-on for your keyboard stand. It can hold either two 1U 19-inch devices or one 2U device, offering versatile and secure gear placement between tiers or beneath the first layer.

length : 48,01 CM  
depth : 24,38 CM  
height : 8,59 CM

weight : 2,30 KG  
material : ALUMINUM







**SKU: 9067 PARIKA TRES 3-TIER ADD-ON FOR BABACU**

This set, comprising 2 adjustable storage arms, is designed to extend your setup to 3 tiers. They feature 8-way adjustable tilt and can extend up to 350 mm in arm length.

|                     |                        |
|---------------------|------------------------|
| support distance    | : 54,00 CM OR 78,00 CM |
| depth 1st level     | : 46,99 CM             |
| depth 2nd&3rd level | : 35,92 CM - 41,02 CM  |
| weight              | : 7,30 KG              |



**SKU: 9066 PARIKA DOIS 2-TIER ADD-ON FOR BABACU**

Expand your setup with this set of 2 adjustable storage arms, ideal for adding a 2nd level. They feature 8-way adjustable tilt and can extend up to 350 mm in arm length.

|                     |                        |
|---------------------|------------------------|
| support distance    | : 54,00 CM OR 78,00 CM |
| depth 1st level     | : 46,99 CM             |
| depth 2nd&3rd level | : 35,92 CM - 41,02 CM  |
| weight              | : 5,00 KG              |



**SKU: 8766| JATOBA ANGULO 8S – MOUNTING BRACKET FOR 19 INCH POWER STRIP | SKU: 8851| JATOBA ANGULO 8S – MOUNTING BRACKET & POWER STRIP**

Jatoba Angulo 8S is a 19" 1U mounting bracket with 180° rotation for a clean, space-saving setup. Available as bracket only or as a set with matching 8-way power strip.

|          |                                         |
|----------|-----------------------------------------|
| weight   | : SKU 8766: 0,60 KG   SKU 8851: 1,50 KG |
| material | : STEEL                                 |



# A B O U T B R A V O M U S I K

Bravo Musik is a Scandinavian distributor with over 35 years of experience in musical instrument sales. Based north of Copenhagen, the company is known for its focus on high-quality products and long-term partnerships in the music industry.

Bravo Musik is the official distributor of Suzuki and Easttop harmonicas in Scandinavia, Hammond Melodion in Denmark and Sweden, and Leslie speakers in Denmark. The company offers a wide range of harmonicas, melodicas, recorders, accessories, spare parts, keyboards, and organs through its webshop [www.bravomusik.eu](http://www.bravomusik.eu).

Since 2025, Bravo Musik has added Black Panther to its portfolio – bringing modular, professional-grade keyboard stands and accessories to musicians and retailers across Scandinavia. With local service, fast delivery, and strong expertise, Bravo Musik is your trusted source for premium stage and studio gear.



[WWW.BRACOMUSIK.EU](http://WWW.BRACOMUSIK.EU)





### VISIT US ON SOCIAL MEDIA OR SUBSCRIBE TO OUR NEWSLETTER

Follow us on Social Media  
Stay up-to-date with the latest products, offers, and news from Black Panther. Follow us on our social media channels or subscribe to our newsletter on our website!

**FACEBOOK:** @ Blackpanthersystem  
**INSTAGRAM:** @ blackpanthersystem  
**YOUTUBE:** @ BLACKPANTHERSYSTEM

THANK YOU VERY MUCH FOR YOUR INTEREST AND TRUST IN OUR PRODUCTS! WE TRULY APPRECIATE IT!







## M O D U L A R   M U S I C   S T A N D S

ENGINEERED BY BLACK PANTHER  
powered by Mott Mobile Systeme  
GmbH & Co. KG  
Am Dittwarer Bahnhof 9-11  
97941 Tauberbischofsheim , Germany  
EMAIL: [CONTACT@BLACKPANTHERSYSTEM.US](mailto:CONTACT@BLACKPANTHERSYSTEM.US)

[WWW.BLACKPANTHERSYSTEM.US](http://WWW.BLACKPANTHERSYSTEM.US)

DISTRIBUTION – SCANDINAVIA  
Bravo Musik / Normand Trading Aps  
Højbjerg Hegn 36  
3200 Helsingør  
Denmark  
Manager: Mr. Lars-Bo Normand  
Office: (+45) 22 34 36 36  
EMAIL: [info@bravomusik.eu](mailto:info@bravomusik.eu)

[WWW.BRAVOMUSIK.EU](http://WWW.BRAVOMUSIK.EU)